

CN

EN



Metal Work 机电类产品简介
Metal Work Mechatronics concise





Metal Work 机电类产品:用我们的专业知识为客户提供全方位服务和协作。
Metal Work Mechatronics: know-how and synergy at your service.



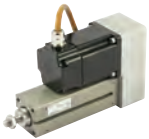
电缸Elektro ISO 15552 系列,
缸径 32 至 100 mm; Elektro
ISO 15552 EK 系列, 缸径 32
mm

Electric cylinder, Elektro ISO
15552 Series, diameters from
32 to 100 mm; Elektro ISO
15552 EK Series, diameter 32



圆形电缸 Round DC Elektro 系
列, 缸径 32 mm

Electric cylinders, Round DC
Elektro Series, diameter 32



电缸 Elektro SSC 系列, 缸径
32 mm

Electric cylinder, Elektro SSC
Series, diameter 32 mm



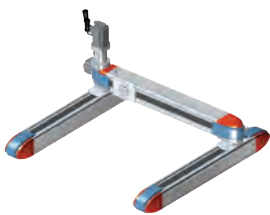
齿形带式无杆电缸, 电机设
置在滑块上, Elektro VBK 系
列和 Elektro SVAK系列。

Cantilever electric axis,
belt-drive rodless, with motor
placed on the carriage, Elektro
VBK series and Elektro SVAK
series.



齿形带式无杆缸电缸, Elektro
Shak 系列, 采用伺服电机或步
进电机

Belt-drive rodless electric axis,
Shak Elektro Series, with
BRUSHLESS or STEPPING
motor



2根平行的齿形带驱动轴叠加1
根横向无杆电缸, 共同构成了
Shak Gantry Elektro 电动门架
系统

Two parallel belt-drive axis
surmounted by a transversal
axis, Shak Gantry Elektro
Series

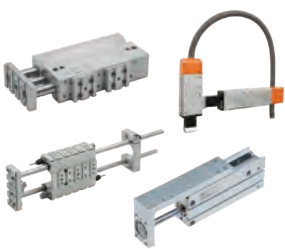


丝杠式无杆电缸 Elektro SK 系
列和齿形带式无杆电缸
Elektro BK 系列

Screw rodless electric axis,
Elektro SK Series, and rodless
electric axis with toothed belt,
Elektro BK Series



控制设备、编程软件
e.motion、可编程驱动器
e.drive 以及e.direct 驱动器
Control devices, e.motion
programmer, e.drive
programmable drive, and
e.direct drive



导向装置、扁平滑台缸和精
密滑台缸系列 S10, S11,
S12, S13 以及 S14
Guide units, flat slides and
precision slides, Series S10,
S11, S12, S13 and S14



铝质、合金钢和不锈钢定制
类产品，根据特定要求与客
户共同研发而成
Customized products made of
aluminum, either alloy steel
and stainless steel, studied in
cooperation with the customer
according to specific
requirements



功能齐全的 2 指 和 3 指气爪
Wide range of 2 and 3 jaws
pneumatic grippers



结实而动力强劲的旋转驱动
器。扭矩高达 120 Nm，缸径
12 至 100 mm
Stout and powerful rotary
actuators for torques up to 120
Nm, diameters from 12 to 100
mm



电-气组合系统，EB80 阀岛系
列，可配备 3 至 128 个电磁
线圈。
Electro-pneumatic system, EB80
Series, from 3 to 128 solenoid
pilots

